



ANGELIK

By antonee

BAR PREP STATION ECONO

BPSE

SPECIFICATIONS:

- ALL STAINLESS STEEL 304 #4 WELDED AND POLISHED CONSTRUCTION.
- 4" BACKSPLASH, UP ON A RADIUS, END CAPS FULLY WELDED AND POLISHED
- ALL COVED CORNER CSA APPROVED SINK INTEGRALLY WELDED TO TOP
- SINK COMING WITH A RECESSED NOTCH TO RECEIVE A SLIDING PLASTIC CUTTING BOARD
- 3-SIDED SKIRT TO MATCH OTHER COMPONENT PROFILE
- STAINLESS STEEL LEGS AND ADJUSTABLE BULLET FEET

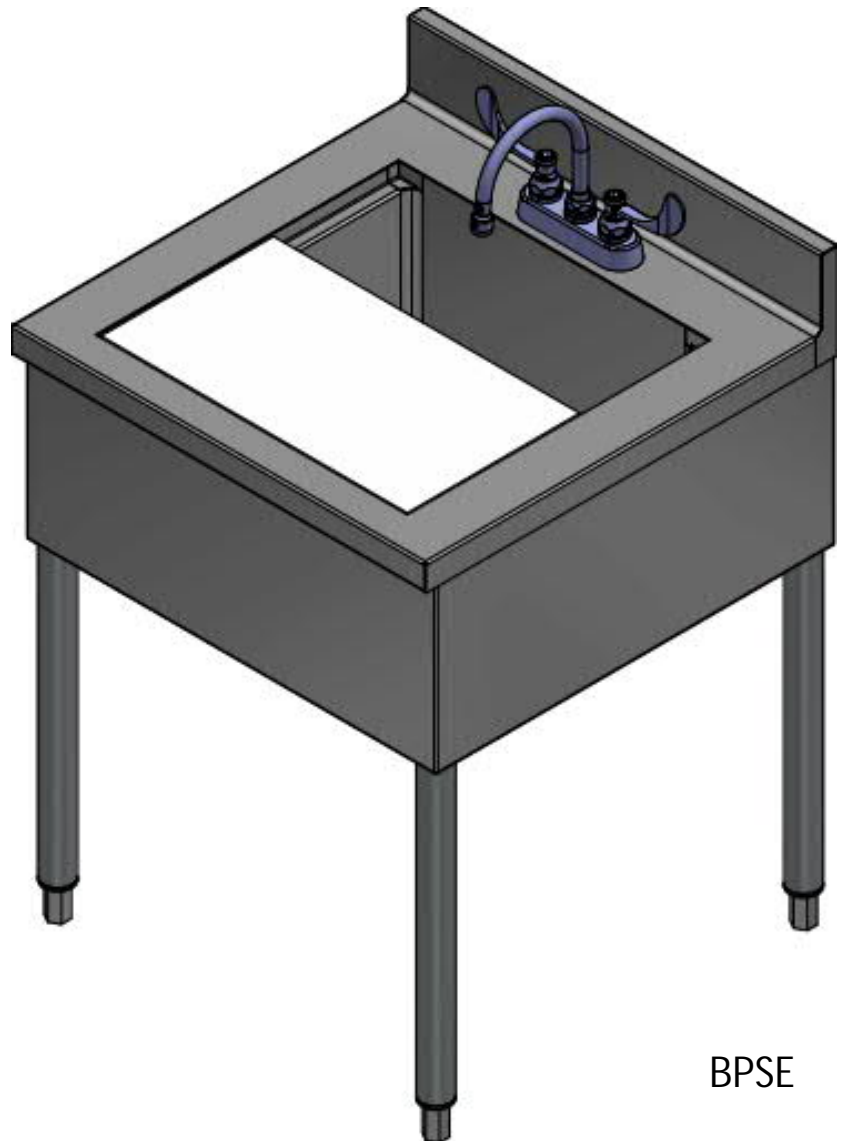
INCLUDED

INSTALLED BAR FAUCET, 4" DECK MOUNT, CSA

OPTIONS

GLASS RINSER IN SINK (-GR)
MARINE EDGES (-ME)

YOUR IDEAL CONDIMENT PREPPING
STATION.



BPSE

