



ANGELIK

By antonee

TOP

TO

SPECIFICATIONS:

ALL STAINLESS STEEL 304 #4 WELDED AND POLISHED CONSTRUCTION.

-4" BACKSPLASH, UP ON A RADIUS, END CAPS FULLY WELDED AND POLISHED

OPTIONS:

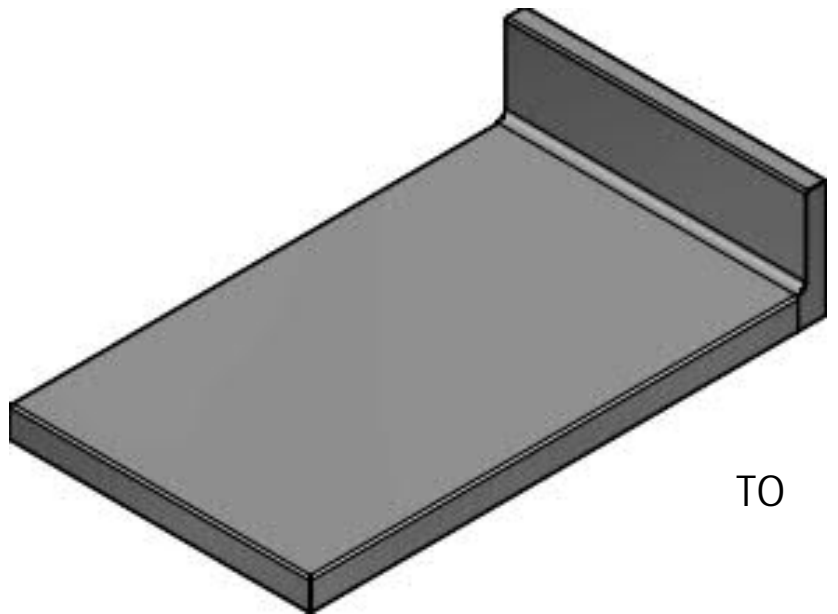
WASTE CHUTE (-W)

NO BACKSPLASH ON SOME DESIGN

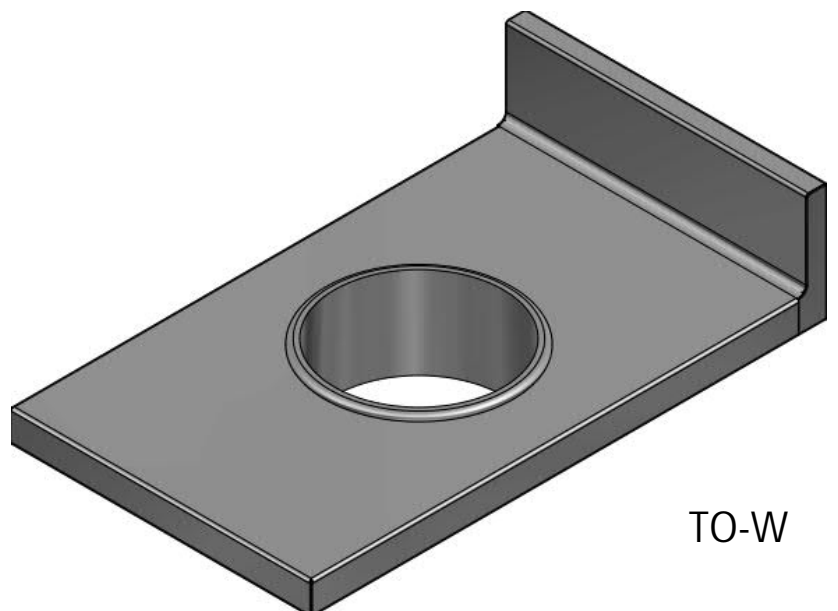
THESE SMALL TOPS ARE MAINLY USED WHEN A CONTINUOUS WORKING SURFACE AND OPEN BOTTOM ARE REQUIRED.

ABOVE:

- AN UNDERCOUNTER DISHWASHER OR FRIDGE
- A GARBAGE BIN STANDING ON THE FLOOR
- ETC



TO



TO-W

