

EQUIPMENT STAND

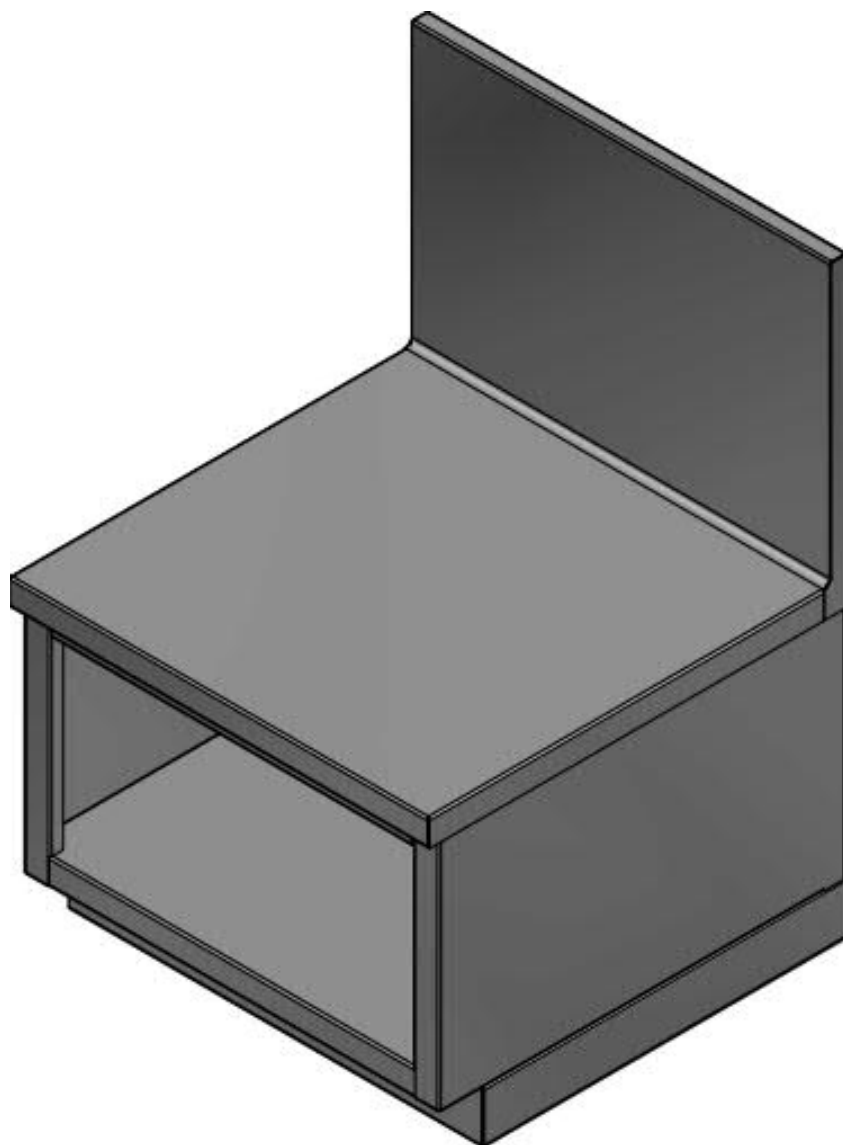
ES

SPECIFICATIONS:

- ALL STAINLESS STEEL 304 #4 WELDED AND POLISHED CONSTRUCTION
- 16" BACKSPLASH, UP ON A RADIUS, END CAPS FULLY WELDED AND POLISHED
- CABINET BASE WITH SOLID KICKPLATE
- LOWER PROFILE TO RECEIVE FROZEN DRINKS MACHINE OR OTHERS (18" HIGH IF REQUIRED)

OPTIONS

- DOOR (-D)
- EXTRA MID SHELF (-EXS)
- CASTERS, 2 W/ BRAKES (-M)



ES

