

BAR POS CABINET (LEGS)

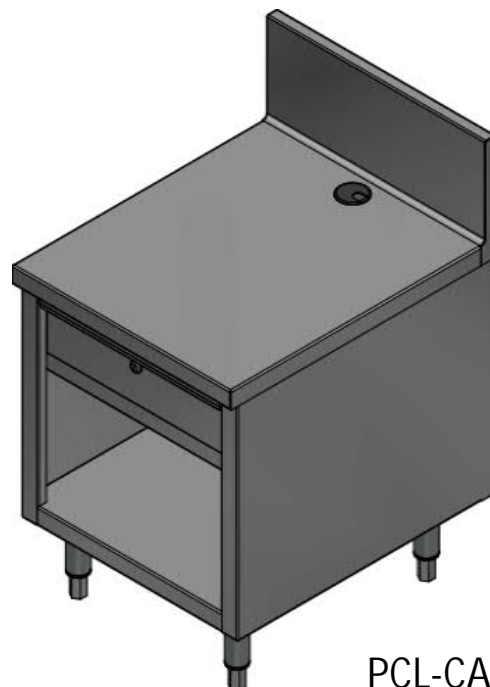
PCL

SPECIFICATIONS:

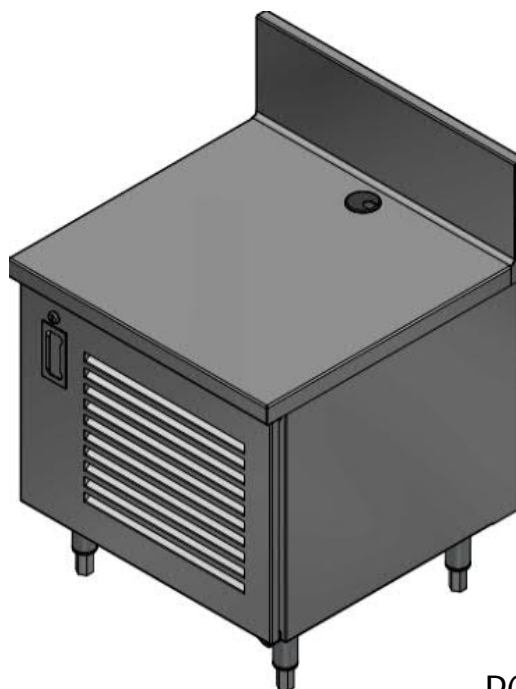
- ALL STAINLESS STEEL 304 #4 WELDED AND POLISHED CONSTRUCTION
- LOWER PROFILE TO FIT POS MACHINE, IF REQUIRED (26" HIGH)
- 8" BACKSPLASH, UP ON A RADIUS, END CAPS FULLY WELDED AND POLISHED
- CABINET BASE WITH 6" STAINLESS STEEL LEGS AND ADJUSTABLE BULLET FEET
- 2" HOLE WITH PLASTIC GROMMET FOR WIRING AND PLUGS

OPTIONS

- DOOR (-D)
- CASH DRAWER (-CASH)
- ADJUSTABLE SHELF (-AS)
- FIXED SHELF (-FS)
- REMOVABLE KICK PLATE, VISIBLE SIDES (-KP)
- DIFFERENT LEG SIZES AVAILABLE



PCL-CASH



PCL-D

