

## WASTE BAR CABINET (LEGS)

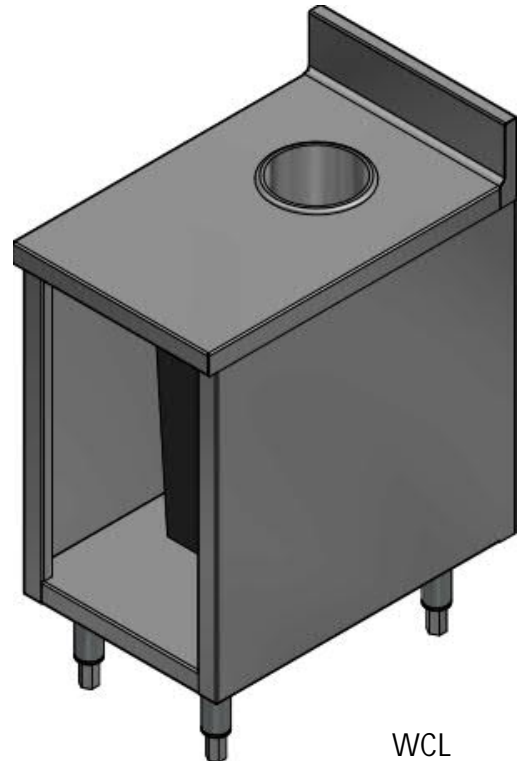
WCL

### SPECIFICATIONS:

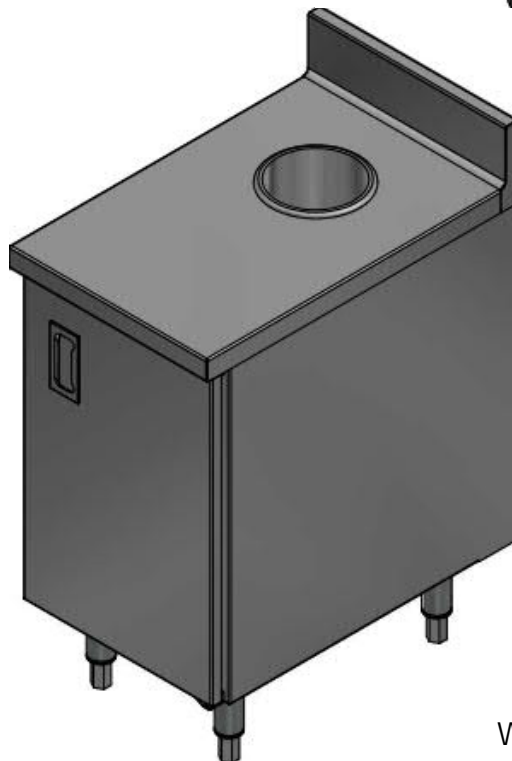
- ALL STAINLESS STEEL 304 #4 WELDED AND POLISHED CONSTRUCTION
- 4" BACKSPLASH, UP ON A RADIUS, END CAPS FULLY WELDED AND POLISHED
- CABINET BASE WITH 6" STAINLESS STEEL LEGS AND ADJUSTABLE BULLET FEET
- DROP-IN WASTE CHUTE

### OPTIONS

- DOOR (-D)
- WASTE CHUTE WELDED TO TOP (-WW)
- GARBAGE BIN (-GB)
- REMOVABLE KICK PLATE, VISIBLE SIDES (-KP)
- DIFFERENT LEG SIZES AVAILABLE



WCL



WCL-D

